

# FINANCIAL SUMMARY

## Financial Summary of The Consolidated Financial Statements of Bangkok Expressway and Metro Public Company Limited and its Subsidiaries

### Financial Highlights

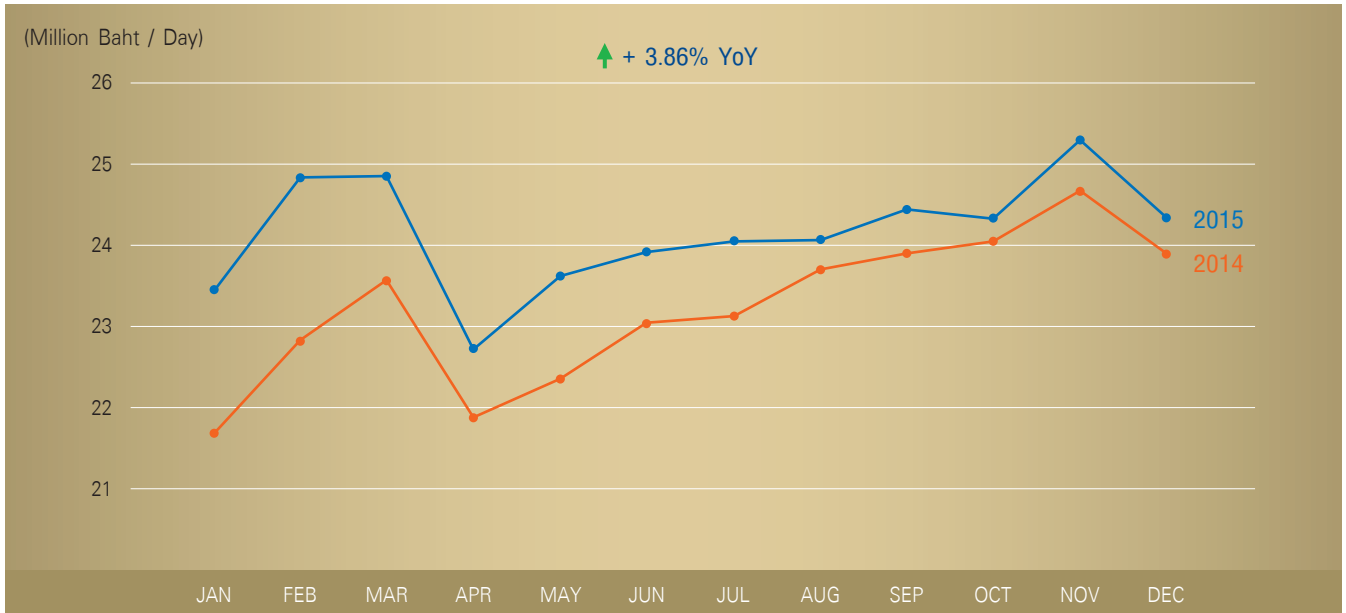
Unit : Million Baht

<b>Consolidated Financial Statements</b> (As at December 31)	<b>2015</b>	<b>2014</b>
Total assets	78,120	70,026
Total liabilities	48,990	43,817
Shareholders' equity	29,130	26,209

<b>Operating Results</b> (For the year ended December 31)	<b>2015</b>	<b>2014</b>
Toll revenue	8,815	8,485
Farebox revenue	2,374	2,248
Commercial development revenue	549	501
Total revenues	13,105	11,884
Gross profit	4,643	4,677
Net profit attributable to the company	2,650	2,745

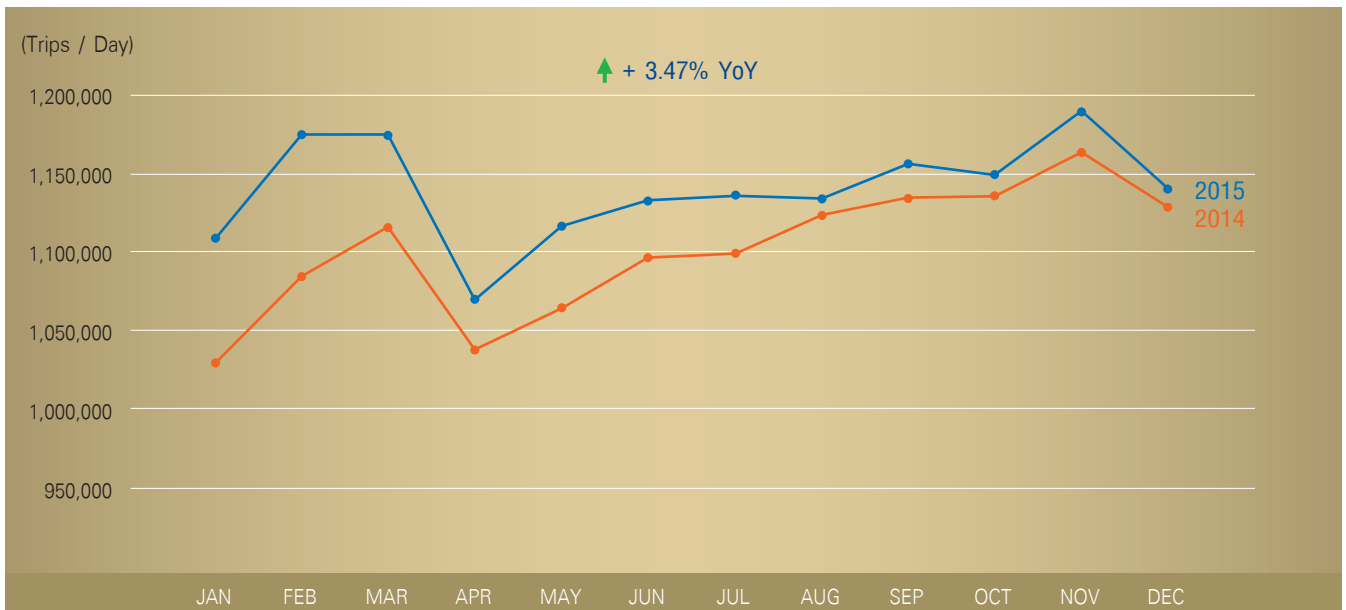
<b>Financial ratios</b>	<b>2015</b>	<b>2014</b>
Net profit margin (%)	20.22	23.10
Return on shareholders' equity (%)	9.76	11.04
Return on total assets (%)	3.65	4.15
Book value per share (baht)	1.90	1.70

## Average Daily Toll Revenue : Chalerm Mahanakorn, Si Rat and Udon Rattaya Expressway



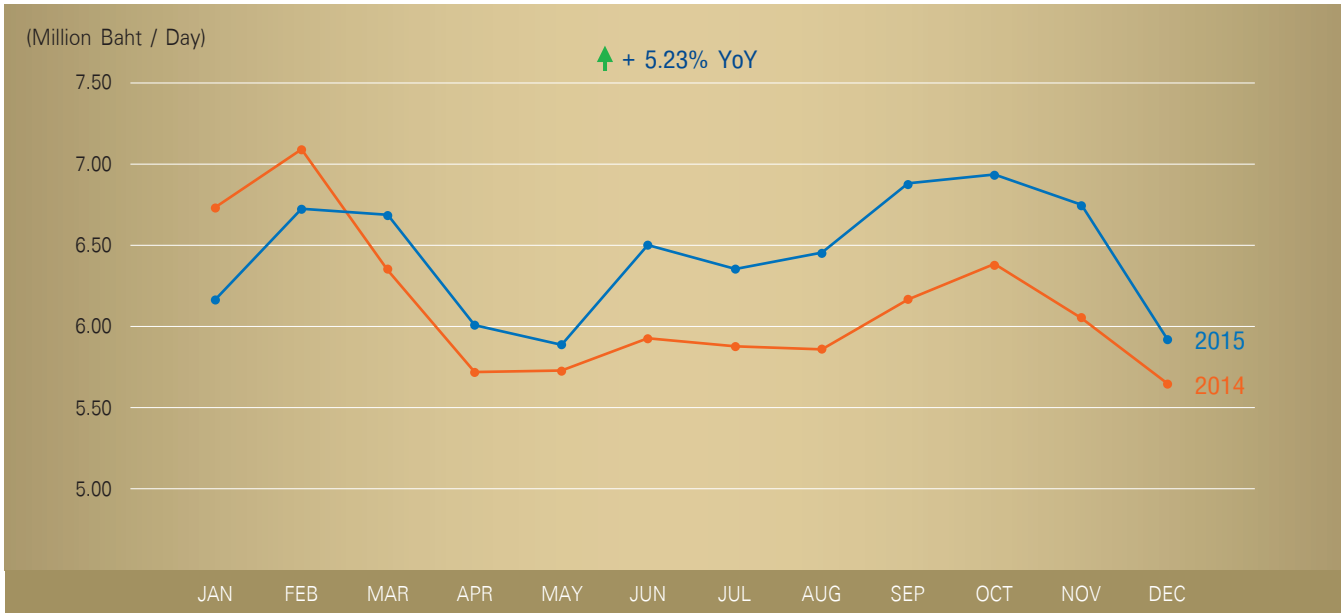
● AVG Daily Toll Revenue 2015 : **24.15** Million Baht / Day      ● AVG Daily Toll Revenue 2014 : **23.25** Million Baht / Day

## Average Daily Traffic : Chalerm Mahanakorn, Si Rat and Udon Rattaya Expressway



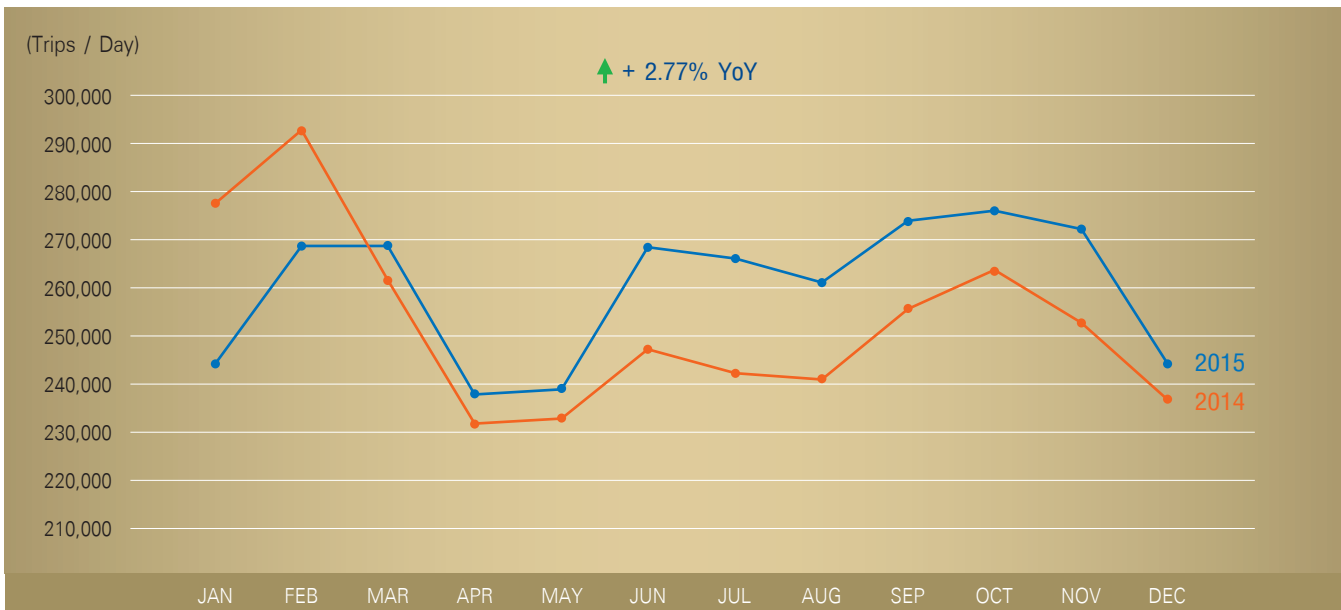
● AVG Daily Traffic 2015 : **1,141,825** Trips / Day      ● AVG Daily Traffic 2014 : **1,103,562** Trips / Day

## Average Daily Farebox Revenue : the MRT ChaloeM Ratchamongkhon Line



—●— AVG Daily Farebox Revenue 2015 : **6.44** Million Baht / Day      —●— AVG Daily Farebox Revenue 2014 : **6.12** Million Baht / Day

## Average Daily Ridership : the MRT ChaloeM Ratchamongkhon Line



—●— AVG Daily Ridership 2015 : **260,325** Trips / Day      —●— AVG Daily Ridership 2014 : **253,255** Trips / Day